

#M20009

## Actin (26F7) Mouse mAb for PLANTS

(tested in Arabidopsis, Oryza sativa, Nicotiana tabacum)

- 50 µl
- 100 µl
- 200 µl

**Abmart**

**Orders** ■ 400-6123-828  
orders@ab-mart.com

**Web** ■ www.ab-mart.com.cn

### BACKGROUND

Actins are highly conserved proteins that are involved in various types of cell motility and are ubiquitously expressed in all eukaryotic cells. As an essential component of cell cytoskeleton, actin plays an important role in cytoplasmic streaming, cell shape determination, cell division, organelle movement and extension growth. In plants, actin preferentially expressed in young and expanding tissues, floral organ primordia, developing seeds, and emerging inflorescence. It displays a very high expression level in mature pollen and pollen tubes.

### REFERENCES

- Huang S, An YQ, McDowell JM, et al The Arabidopsis ACT11 actin gene is strongly expressed in tissues of the emerging inflorescence, pollen, and developing ovules. *Plant Mol Biol.* 1997,33(1):125-39.

### SOURCE

This Abmart monoclonal antibody is produced by immunizing mice with Arabidopsis ACT11 full-length protein.

### SPECIFICITY

Actin (26F7) Mouse mAb for Plants detects endogenous level of Actin protein.

### STORAGE

Store the product at -20°C. Stable for one year from the date of shipment.

### REACTIVITY

Arabidopsis, Oryza sativa, Nicotiana tabacum

### ISOTYPE

Mouse IgG2b

### PREDICTED MOLECULAR WEIGHT

45 kDa

### IMPORTANT

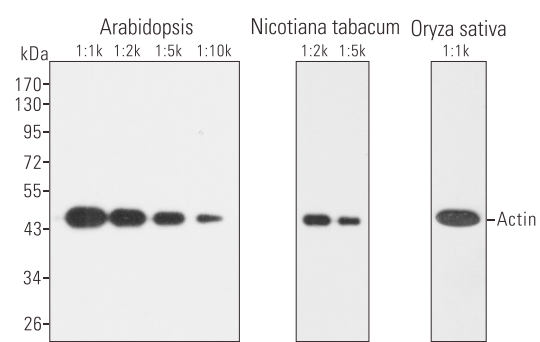
Use an **anti-MOUSE** secondary antibody to detect the antibody.

### RECOMMENDED ANTIBODY DILUTIONS

Western blotting 1:2000

**\* For Western blots, incubate membrane with diluted antibody in 5% w/v nonfat dry milk, 1× TBS, 0.05% Tween-20 at 4°C with gentle shaking, overnight.**

### APPLICATION DATA



Western blot analysis of lysates from various tissue using Actin (26F7) Mouse mAb for Plants.

### COMPANION PRODUCTS

#M21001 Goat Anti-Mouse IgG-HRP

#M20010 Actin (5A7) Mouse mAb (Human, Monkey, Mouse, Rat, Dog, Spodoptera frugiperda)