

B30010

# Mouse IgG

- 500 µg (1mg/ml)
- 1000 µg (1mg/ml)



**Orders** ■ 400-6123-828  
orders@ab-mart.com

**Web** ■ www.ab-mart.com.cn

## BACKGROUND

Immunoglobulin G (IgG), is one of the most abundant proteins in human serum which constitutes 75% of serum immunoglobulins, IgG is produced by B lymphocytes as a part of our adaptive immune response. The IgG molecule has two separate functions; to bind to the pathogen that elicited the response and to recruit other cells and molecules to destroy the antigen through Antibody-dependent cell-mediated cytotoxicity (ADCC) effection.

## REFERENCES

1. Junqueira, Luiz C.; Jose Carneiro (2003). Basic Histology.
2. Mallery DL, McEwan WA, Proc Natl Acad Sci USA.107(46):19985-90.2010.

## SOURCE

This Abmart Mouse IgG is isolated from normal mouse serum.

## SPECIFICITY

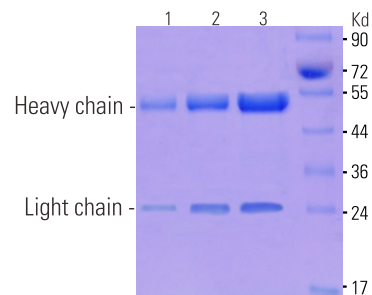
This antibody has been selected as an isotype control as it has no known specificity.

## STORAGE

Store at -20°C. Stable for one year from the date of shipment.

**Reactivity Key:** H—human, M—mouse, R—rat, ChHm—Chinese hamster, Mk—monkey, C—chicken, Dm—D.

## SERUM PURIFICATION



SDS-PAGE detected purified

## COMPANION PRODUCTS

#M21001 Goat Anti-Mouse IgG-HRP

Please visit [www.abmart.com.cn/products.aspx](http://www.abmart.com.cn/products.aspx) for a complete listing of recommended companion products.