

T91162

Pan Phospho-Tyrosine(泛酪氨酸磷酸化抗体)



50ul

100ul

Orders ■ 400-6123-828

orders@ab-mart.com

Web ■ www.ab-mart.com.cn

IMMUNGEN

A synthetic peptide corresponding to a sequence containing phosphorylated Y.

STORAGE

Store at -20 °C. Stable for one year from the date of shipment.

REACTIVITY

Human, Mouse, Rat, Other (Wide Range)

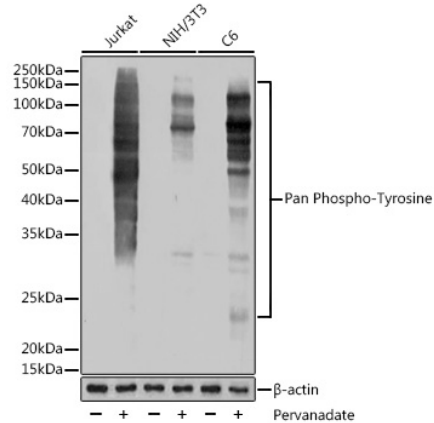
ISOTYPE

Rabbit IgG

RECOMMENDED ANTIBODY DILUTIONS

Western blotting 1:500 -1:2000

APPLICATION



Western blot analysis of extracts of various cell lines, using Pan Phospho-Tyrosine antibody (T91162) at 1:1000 dilution. Jurkat cells and NIH/3T3 cells and C6 cells were treated by Pervanadate (1 mM) at 37°C for 30 minutes.

COMPANION PRODUCTS

#M20001 His-Tag (2A8) Mouse mAb

#M20002 Myc-Tag (19C2) Mouse mAb

#M20003 HA-Tag(126011) Mouse mAb

#M20004 GFP-Tag (7G9) Mouse mAb

#M20007 GST-Tag (12G8) Mouse mAb

#M20012 Anti-Myc-Tag Mouse mAb (Agarose Conjugated)

#M20013 Anti-HA-Tag Mouse mAb (Agarose Conjugated)

#M20018 Anti-DYKDDDDK-Tag Mouse mAb (Agarose Conjugated) IBinds to same epitope as Sigma S Anti-FLAG M2 Antibody)