

#M20008

DYKDDDDK-Tag(3B9) Mouse mAb

(Binds to same epitope as sigma's Anti-FLAG® M2 Antibody)



50 µl (25 Western mini-blots)

100 µl (50 Western mini-blots)

200 µl (100 Western mini-blots)

Orders ■ 400-6123-828

orders@ab-mart.com

Web ■ www.ab-mart.com.cn

BACKGROUND

Epitope tags are useful for the labeling and detection of proteins using immunoblotting, immunoprecipitation and immunostaining techniques. Due to their small size, they are unlikely to affect the tagged protein's biochemical properties. The DYKDDDDK peptide has been used extensively as a general epitope tag in expression vectors. This peptide can be expressed and detected with the protein of interest as an amino-terminal or carboxy-terminal fusion.

REFERENCES

1. Brizzard, B. L. et al. 1994. Immunoaffinity purification of FLAG epitope-tagged bacterial alkaline phosphatase using a novel monoclonal antibody and peptide elution. *Biotechniques* 16, 730-735.

SOURCE

This Abmart monoclonal antibody is produced by immunizing animals with a synthetic DYKDDDDK peptide (KLH-coupled).

SPECIFICITY

DYKDDDDK Tag Antibody detects exogenously expressed DYKDDDDK proteins in cells.

STORAGE

Store at -20°C. Stable for one year from the date of shipment.

REACTIVITY

All

ISOTYPE

Mouse IgG2b

IMPORTANT

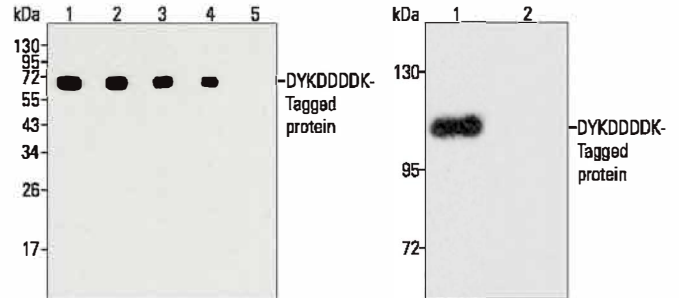
Use an **anti-MOUSE** secondary antibody to detect the 3B9 antibody.

RECOMMENDED ANTIBODY DILUTIONS

| | |
|---------------------|--------|
| Western blotting | 1:5000 |
| Immunofluorescence | 1:1000 |
| Immunoprecipitation | 1:100 |
| ELISA | 1:2000 |

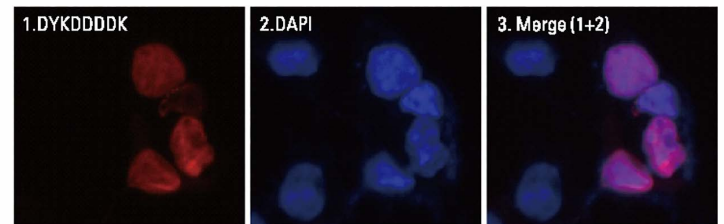
*** For Western blots, incubate membrane with diluted antibody in 5% w/v nonfat dry milk, 1× TBS, 0.05% Tween-20 at 4°C with gentle shaking, overnight.**

APPLICATION DATA



Western blot analysis of over-expressed DYKDDDDK-tagged protein in 293T cell lysate, using Abmart DYKDDDDK-Tag (3B9) Mouse mAb. The antibody dilutions are 1:2000 (lane 1), 1:5000 (lane 2), 1:10000 (lane 3) and 1:20000 (lane 4). Each lane was loaded with 2 µg of cell lysate. Lane 5 is 2 µg of mock transfected cell lysate at a dilution of 1:5000.

Lane 1: 293T cell lysate transfected with DYKDDDDK-tag protein.
Lane 2: Mock transfected 293T cell lysate. The antibody dilution is 1:100.



IF analysis of 293T cells transfected with a DYKDDDDK-tagged protein, using Abmart DYKDDDDK-Tag (3B9) Mouse mAb at a 1:1000 dilution.

COMPANION PRODUCTS

- #M20001 His-Tag (2A8) Mouse mAb
- #M20002 Myc-Tag (19C2) Mouse mAb
- #M20003 HA-Tag (26D11) Mouse mAb
- #M20004 GFP-Tag (7G9) Mouse mAb
- #M20007 GST-Tag (12G8) Mouse mAb
- #M20012 Anti-Myc-Tag Mouse mAb (Agarose Conjugated)
- #M20013 Anti-HA-Tag Mouse mAb (Agarose Conjugated)
- #M20018 Anti-DYKDDDDK-Tag Mouse mAb (Agarose Conjugated) (Binds to same epitope as Sigma's Anti-FLAG® M2 Antibody)