

#P79884-2R



## Total and Cleaved Caspase 1

### Antibody

- 50ul
- 100 uL

<b>Order</b>	021-34695924 orders@ab-mart.com
<b>Support</b>	400-6123-828 support1@ab-mart.com
<b>Web</b>	www.abmart.cn

### Description:

Thiol protease that cleaves IL-1 beta between an Asp and an Ala, releasing the mature cytokine which is involved in a variety of inflammatory processes. Important for defense against pathogens. Cleaves and activates sterol regulatory element binding proteins (SREBPs). Can also promote apoptosis. Upon inflammasome activation, during DNA virus infection but not RNA virus challenge, controls antiviral immunity through the cleavage of CGAS, rendering it inactive. In apoptotic cells, cleaves SPHK2 which is released from cells and remains enzymatically active extracellularly.

**Uniprot:** P29466

### Alternative Names:

CASP-1; CASP1; CASP1\_HUMAN; Caspase 1; Caspase-1 subunit p10; ICE; IL-1 beta-converting enzyme; IL-1BC; IL1 beta converting enzyme; IL1B convertase; Interleukin 1 beta convertase; Interleukin 1B converting enzyme; Interleukin-1 beta convertase; Interleukin-1 beta-converting enzyme; p45; Caspase1;

**Specificity:** Caspase 1 Antibody detects endogenous levels of total Caspase 1 and cleaved P20.

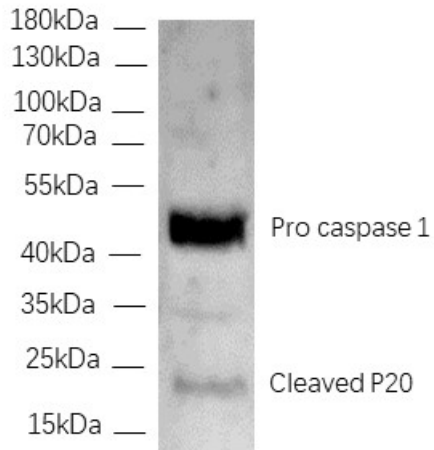
**Reactivity:** Human, Mouse, Rat

**Source:** Rabbit

**Mol.Wt.:** 20 kDa (cleaved p20); 35 kDa (cleaved p33); 45 kDa (pro caspase 1)

**Storage Condition:** Store at -20 °C. Stable for 12 months from date of receipt.

**Application:** WB 1:1000-1:2000; IF/IHC 1:100-1:1000



Western blot analysis of Caspase 1 using RAW 264.7 with 1  $\mu\text{g}/\text{mL}$  lipopolysaccharides (LPS) for 4 h followed by 10  $\mu\text{M}$  nigericin treatment under serum starved conditions for 2 h, whole cell lysate.