

#ADC-Ab0001



Anti-Dxd (Exatecan derivative for ADC)
monoclonal antibody

- 50ul
- 100ul

Order	021-34695924 orders@ab-mart.com
Support	400-6123-828 support1@ab-mart.com
Web	www.abmart.cn

Description:

Dxd (Exatecan derivative for ADC) is a potent inhibitor of DNA topoisomerase I (IC50: 0.31 μ M). It is used as a conjugated drug of HER2-targeting ADC.

#ADC-Ab0001 mouse monoclonal antibody can recognize Dxd and Dxd structurally similar molecules

Concentration: 1 mg/ml. Protein was determined by OD280 absorbance.

Physical State: Liquid

Reactivity: Dxd and Dxd structurally similar molecules

Source: Mouse monoclonal IgG

Immunogen: Dxd conjugated to keyhole limpethaemocyanin (KLH)

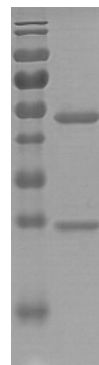
Purification: Purified by Protein A/G

Storage Condition: Store at -20 °C. Stable for 12 months from date of receipt.

StorageBuffer:

1 \times PBS,pH7.4,containing 0.05% BSA, 50% glyceroland 0.03%Proclin300.

Purity: >90% as determined by SDS-PAGE.



Application: ELISA

Competitive ELISA:

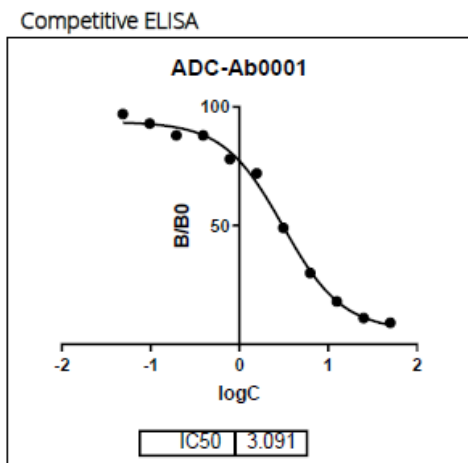
Coating by using Dxd-VLP, free Dxd added with serial dilution for competition.

IC50: 3.091 ng/ml

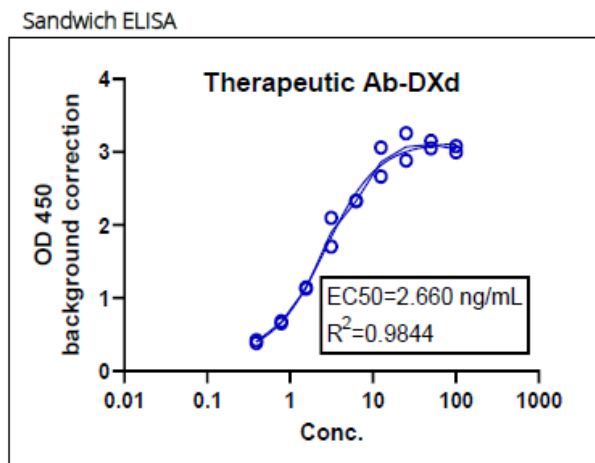
Sandwich ELISA:

Coating by using an therapeutic Ab-Dxd, and added anti-Dxd antibody (ADC-Ab0001) with serial dilution.

EC50: 2.660 ng/ml



*coating by using DXd-VLP, free DXd added with serial dilution for competition purpose



*coating by using An therapeutic Ab-DXd with serial dilution