

#D10007

ACTH[2020] Mouse mAb



Orders ■ 400-6123-828
orders@ab-mart.com

Web ■ www.ab-mart.com.cn

- 50 μ l
- 100 μ l
- 200 μ l

DESCRIPTION

ACTH stimulates secretion of glucocorticoid steroid hormones from adrenal cortex cells, especially in the zona fasciculata of the adrenal glands. ACTH acts by binding to cell surface ACTH receptors, which are located primarily on adrenocortical cells of the adrenal cortex. The ACTH receptor is a seven-membrane-spanning G protein-coupled receptor. Upon ligand binding, the receptor undergoes conformation changes that stimulate the enzyme adenylyl cyclase, which leads to an increase in intracellular cAMP and subsequent activation of protein kinase A.

SPECIFICITY

Human ACTH

FORMAT

Purified : IgG / Liquid
Purification : Affinity chromatography on Protein G
Buffer system : 10 mM Hepes , 75 mM NaCl , pH 7.5, containing 0.05%
Procline 300

HOST/ISOTYPE

Mouse / IgG1

CLONE

2020

IMMUNOGEN

Synthetic peptide corresponding to the amino acids 1-39 of human ACTH, conjugated to a high molecular weight carrier

APPLICATION

ELISA 1:10000--1:5000000

STORAGE

Stored at -20°C or below until use. Avoid repeated freezing and thawing cycles.

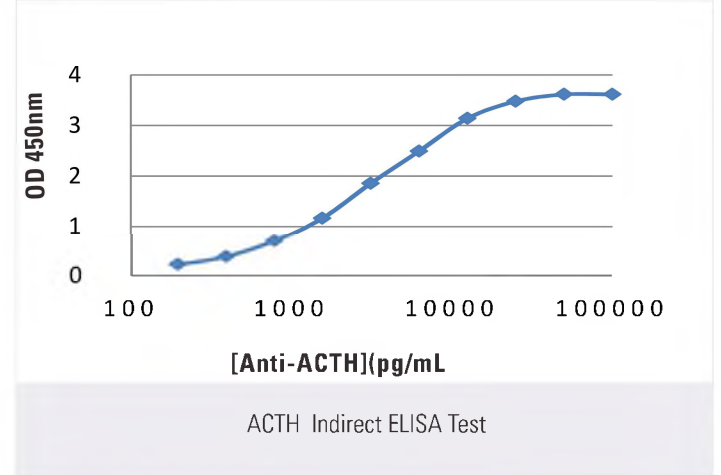
COMPANION PRODUCTS

- #D10000 PTH[3H19-B] Mouse mAb
- #D10001 PTH[4G4] Mouse mAb
- #T30000 Digoxin[1B9] Mouse mAb
- #T30001 Digoxin[2N7] Mouse mAb
- #T30003 Digoxin[2N7] mAb (HRP Coujugated)

Reactivity Key: H—human, M—mouse, R—rat, ChHm—Chinese hamster, Mk—monkey, C—chicken, Dm—D.melanogaster, X—xenopus, Z—zebrafish, B—bovine, Dg—dog, Pg—pig, Sc—S.cerevisiae, Ce—C.elegans, Hr—horse

rev.2017-1

APPLICATION DATA



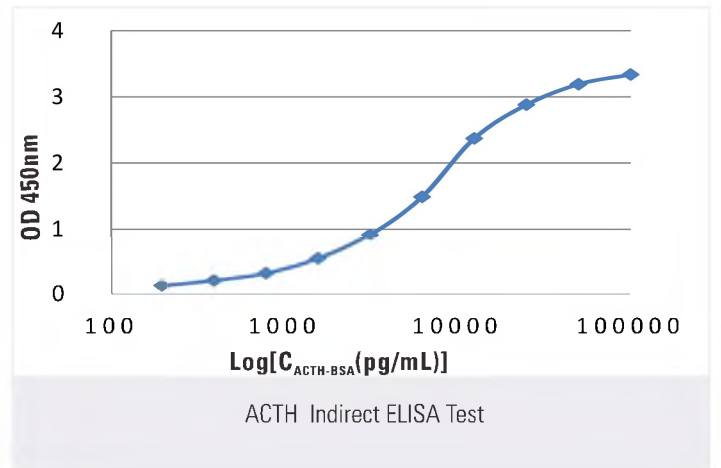
Coating : ACTH at 1 μ g/mL by Carbonate-Bicarbonate

Incubation : Anti-ACTH antibody at 100--0.1 ng/mL dilution

Secondary

Goat Anti-Mouse IgG-HRP at 1/10000 dilution

Blocking/Dilution buffer : 5% milk/PBST



Coating : ACTH at 1000--0.1 ng/mL by Carbonate-Bicarbonate

Incubation : ACTH at 1 μ g/mL dilution

Secondary

Goat Anti-Mouse IgG-HRP at 1/10000 dilution

Blocking/Dilution buffer : 5% milk/PBST

For *in vitro* research use only and not intended for use in humans or animals.

Human ACTH Quantitation Set



Orders ■ 400-6123-828
orders@ab-mart.com

Web ■ www.ab-mart.com.cn

DESCRIPTION

ACTH stimulates secretion of glucocorticoid steroid hormones from adrenal cortex cells, especially in the zona fasciculata of the adrenal glands. ACTH acts by binding to cell surface ACTH receptors, which are located primarily on adrenocortical cells of the adrenal cortex. The ACTH receptor is a seven-membrane-spanning G protein-coupled receptor. Upon ligand binding, the receptor undergoes conformation changes that stimulate the enzyme adenylyl cyclase, which leads to an increase in intracellular cAMP and subsequent activation of protein kinase A.

SPECIES REACTIVITY

ACTH monoclonal antibodies (2L24 and 2020) recognize human ACTH protein

SENSITIVITY

The limit of detection for antibody pair is less than 3.32 pg/mL

PRODUCT BUFFER

10 mM Hepes , 75 mM NaCl , pH 7.5 , containing 0.05% Procline 300

STORAGE

Stored at -20°C or below until use. Avoid repeated freezing and thawing cycles.

PRODUCTS INFORMATION

| Cat. NO | Clone | Ig Subclass |
|---------|-------|-------------|
| D10006 | 2L24 | IgG2b |
| D10007 | 2020 | IgG1 |

RECOMMEND ANTIBODY DILUTION

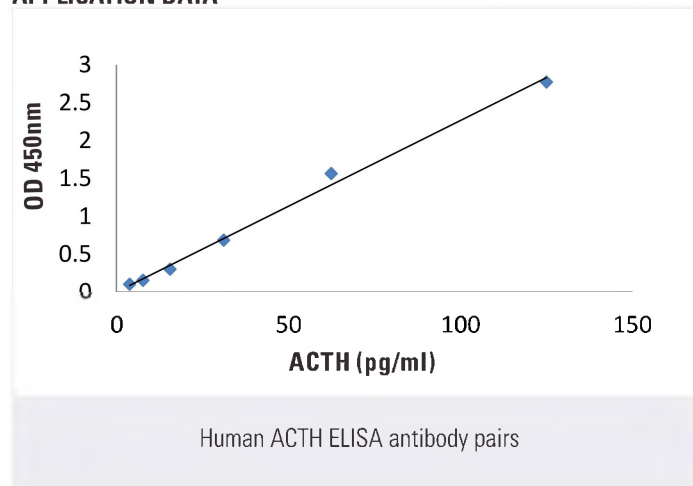
ELISA Capture :1-10 µg/mL

ELISA Detection: 0.1-0.5 µg/mL

Recommended antibody pairing for sandwich immunoassay:

| Capture | D10006 (2L24) | D10007 (2020) |
|---------------|---------------|---------------|
| Detection | | |
| D10006 (2L24) | | - |
| D10007 (2020) | + | |

APPLICATION DATA



GENERAL CONDITIONS:

1. Microplate was incubated with streptavidin and blocked with PBS containing 5%BSA one hour at 37°C, followed by 5 washing cycles;
2. Add ACTH protein into well as soon as possible;
3. Add Biotinylated antibody against ACTH into well;
4. Add HRP-labeled antibody against ACTH, incubation for 4.5 hours at 37°C;
5. Absorbance determination of bound peroxidase activity

COMPANION PRODUCTS

- #T40008 CD3 Antibody
- #T40009 CD4 Antibody
- #T40010 CD8 Antibody
- #T40011 CD46 Antibody
- #T40012 CD47 Antibody

Reactivity Key: H–human, M–mouse, R–rat, ChHm–Chinese hamster, Mk–monkey, C–chicken, Dm–D.melanogaster, X–xenopus, Z–zebrafish, B–bovine, Dg–dog, Pg–pig, Sc–S.cerevisiae, Ce–C.elegans, Hr–horse

Human ACTH Quantitation Set

Orders ■ 400-6123-828
orders@ab-mart.com

Web ■ www.ab-mart.com.cn

DESCRIPTION

ACTH stimulates secretion of glucocorticoid steroid hormones from adrenal cortex cells, especially in the zona fasciculata of the adrenal glands. ACTH acts by binding to cell surface ACTH receptors, which are located primarily on adrenocortical cells of the adrenal cortex. The ACTH receptor is a seven-membrane-spanning G protein-coupled receptor. Upon ligand binding, the receptor undergoes conformation changes that stimulate the enzyme adenylyl cyclase, which leads to an increase in intracellular cAMP and subsequent activation of protein kinase A.

SPECIES REACTIVITY

ACTH monoclonal antibodies (2L24 and 4E21) recognize human ACTH protein

SENSITIVITY

The limit of detection for antibody pair is less than 8.71 pg/mL

PRODUCT BUFFER

10 mM Hepes , 75 mM NaCl , pH 7.5 , containing 0.05% Procline 300

STORAGE

Stored at -20°C or below until use. Avoid repeated freezing and thawing cycles.

PRODUCTS INFORMATION

| Cat. NO | Clone | Ig Subclass |
|---------|-------|-------------|
| D10006 | 2L24 | IgG2b |
| D10008 | 4E21 | IgG2b |

RECOMMEND ANTIBODY DILUTION

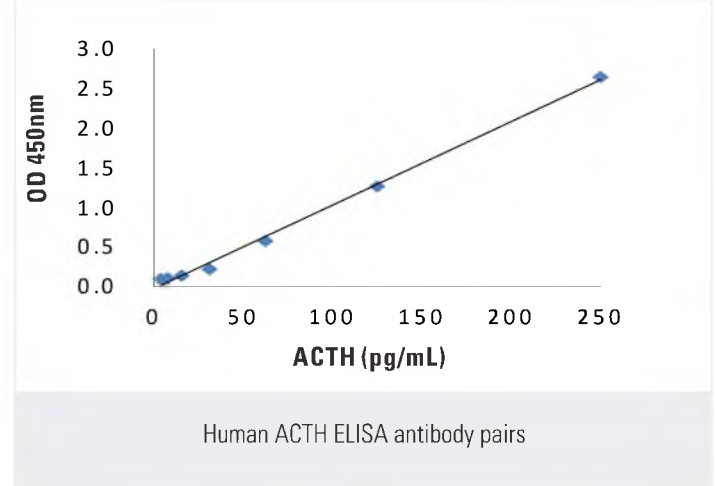
ELISA Capture :1-10 µg/mL

ELISA Detection: 0.1-0.5 µg/mL

Recommended antibody pairing for sandwich immunoassay:

| Capture \ Detection | D10006 (2L24) | D10008 (4E21) |
|---------------------|---------------|---------------|
| D10006 (2L24) | | + |
| D10008 (4E21) | + | |

APPLICATION DATA



GENERAL CONDITIONS:

1. Microplate was incubated with streptavidin and blocked with PBS containing 5%BSA one hour at 37°C, followed by 5 washing cycles;
2. Add ACTH protein into well as soon as possible;
3. Add Biotinylated antibody against ACTH into well;
4. Add HPR-labeled antibody against ACTH, incubation for 4.5 hours at 37°C;
5. Absorbance determination of bound peroxidase activity

COMPANION PRODUCTS

- #T40008 CD3 Antibody
- #T40009 CD4 Antibody
- #T40010 CD8 Antibody
- #T40011 CD46 Antibody
- #T40012 CD47 Antibody

Reactivity Key: H–human, M–mouse, R–rat, ChHm–Chinese hamster, Mk–monkey, C–chicken, Dm–D.melanogaster, X–xenopus, Z–zebrafish, B–bovine, Dg–dog, Pg–pig, Sc–S.cerevisiae, Ce–C.elegans, Hr–horse