

LK17999

Biotin-Linked Stratifin (SFN)



Order 021-34695924
orders@ab-mart.com
Support 400-6123-828
support1@ab-mart.com
Web www.ab-mart.com.cn

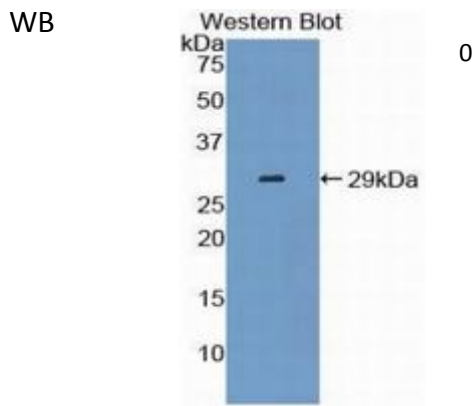
□ 100ul;

UniProt : P31947

Alternative Names:

YWHAS; HME1; 14-3-3 Protein Sigma; Epithelial cell marker protein 1

Application:



Reactivity : Mouse;Rat;Human

Application : WB IHC IF

Dilution:

Western blotting: 0.5-2µg/mL

Immunocytochemistry in formalin fixed cells: 5-20µg/mL

Immunohistochemistry in formalin fixed frozen section: 5-20µg/mL

Immunohistochemistry in paraffin section: 5-20µg/mL

Optimal working dilutions must be determined by end user.

Purification:

Antigen-specific affinity chromatography followed by Protein A affinity chromatography

Storage Condition and Buffer:

0.01M PBS, pH7.4, containing 0.05% Proclin-300, 50% glycerol.

Tag : Immune molecule;

Form : Liquid

Concentration : 500µg/mL