

LK30043

Biotin-Linked CD5 Antigen Like Protein (CD5L)



Order 021-34695924
orders@ab-mart.com
Support 400-6123-828
support1@ab-mart.com
Web www.ab-mart.com.cn

100ul;

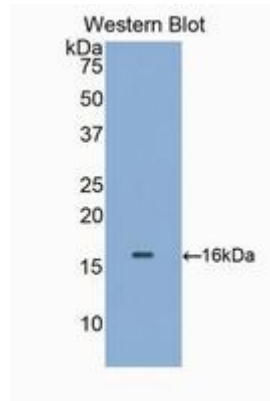
UniProt : O43866

Alternative Names:

API6; CT-2; SP-ALPHA; Spalpha; Apoptosis Inhibitor 6; Scavenger Receptor Cysteine Rich Family; IgM-associated peptide

Application:

WB



0

Reactivity : Human

Application : WB IHC IF

Dilution:

Western blotting: 0.2-2µg/mL;1:250-2500

Immunohistochemistry: 5-20µg/mL;1:25-100

Immunocytochemistry: 5-20µg/mL;1:25-100

Optimal working dilutions must be determined by end user.

Purification:

Antigen-specific affinity chromatography followed by Protein A affinity chromatography

Storage Condition and Buffer:

PBS, pH7.4, containing 0.02% NaN₃, 50% glycerol.

Tag : CD & Adhesion molecule;

Form : Liquid

Concentration : 500µg/mL

