

LK61521

Biotin-Linked Mesothelin (MSLN)



Order 021-34695924
orders@ab-mart.com
Support 400-6123-828
support1@ab-mart.com
Web www.ab-mart.com.cn

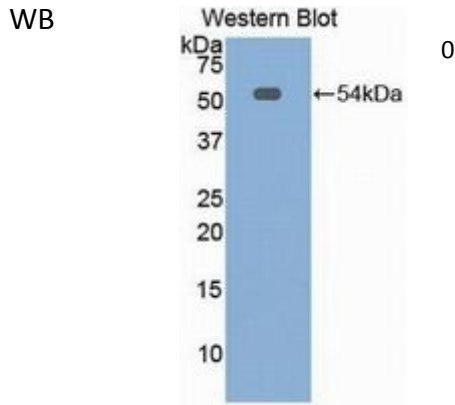
□ 100ul;

UniProt : Q13421

Alternative Names:

SMR; MPF; CAK1; Pre-pro-megakaryocyte-potentiating factor; Megakaryocyte-potentiating factor

Application:



Reactivity : Human

Application : WB IHC IF

Dilution:

Western blotting: 0.5-2ug/ml

Immunocytochemistry in formalin fixed cells: 5-20ug/ml

Immunohistochemistry in formalin fixed frozen section: 5-20ug/ml

Immunohistochemistry in paraffin section: 5-20ug/ml

Enzyme-linked Immunosorbent Assay: 0.05-2ug/ml

Optimal working dilutions must be determined by end user.

Purification:

Antigen-specific affinity chromatography followed by Protein A affinity chromatography

Storage Condition and Buffer:

PBS, pH7.4, containing 0.02% NaN₃, 50% glycerol.

Tag : Metabolic pathway;

Form : Liquid

Concentration : 500µg/mL